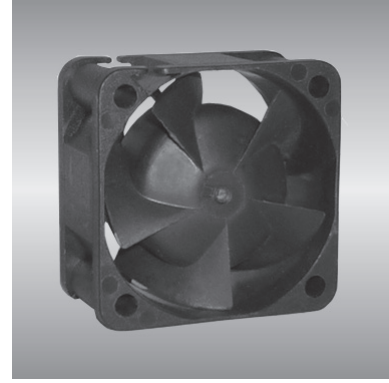


# 38 AG series

x38x20mm



## General Specifications

- Motor : 4 Poles brushless DC motor
- Frame & Impeller : Plastic(UL 94V-0)
- Storage temperature : -40° to +75°
- Operating temperature : -10° to +70°

## Major Characteristic Parameters

Model	*Bearing System	Rated Voltage	Operating Voltage Range	Rated Current	Rated Speed	Maximum Air Flow		Maximum Static Pressure		Sound Level	Weight
Part NO.	B / S / F	V	V	A	RPM	m <sup>3</sup> /min	CFM	mm-H <sub>2</sub> O	In-H <sub>2</sub> O	dBA	g
AGE03820_12L	B	12	7.0~13.2	0.10	6700	0.184	6.5	6.0	0.24	35.8	30.5
AGE03820_24L	B	24	14.0~26.4	0.07	6700	0.184	6.5	6.0	0.24	35.8	30.5
AGE03820_12M	B	12	7.0~13.2	0.12	8000	0.220	7.8	8.6	0.34	39.7	30.5
AGE03820_24M	B	24	14.0~26.4	0.07	8000	0.220	7.8	8.6	0.34	39.7	30.5
AGE03820_12H	B	12	7.0~13.2	0.13	8900	0.244	8.6	10.6	0.42	42.0	30.5
AGE03820_24H	B	24	14.0~26.4	0.09	8900	0.244	8.6	10.6	0.42	42.0	30.5
AGE03820_12U	B	12	7.0~13.2	0.30	10000	0.279	9.7	13.4	0.53	43.0	30.5
AGE03820_24U	B	24	14.0~26.4	0.17	10000	0.279	9.7	13.4	0.53	43.0	30.5

\*Bearing system B: Two Ball Bearing F: Fluid Bearing S: Sleeve Bearing

